

Intro to PhotoShop Common Tips and Tricks

James Falkofske
UW-Rock County

Most Common Problems

- Orientation
- Exposure
- Color Balance
- Incorrect Cropping
- Incorrect Image Size
- Blemishes or Distracting Backgrounds
- Need to add Words to Image

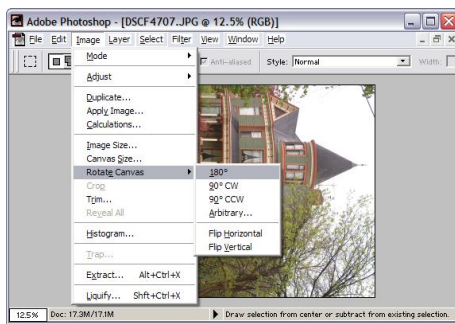
Before You Start...

- Best final image quality starts with...
 - Proper exposure
 - Largest practical image size / resolution
 - Correctly composed images (no distracting backgrounds, and images "cropped in" to main subject)
- Print Production 200dpi to 300dpi
- Web Resolution 72dpi
- A 700 x 500 pixel image would yield approx. 10" x 7" on a website, but only 2.3 x 1.7" on high-quality printing press (300dpi)

Digital Files into Computer

- Digital Camera
- PhotoCD at local Retailers
- Flatbed Scanner
- Negative Scanner
- Overexposure cannot be readily fixed, however moderate underexposure can be

Orientation (Rotate Canvas)



Exposure

- Image > Adjust
 - Levels (low-mid-high tones)
 - Autolevels (auto set)
 - Curves (adjust any tone band)
 - Brightness / Contrast (quick!)
 - Variations (image "previews")

Image Adjust

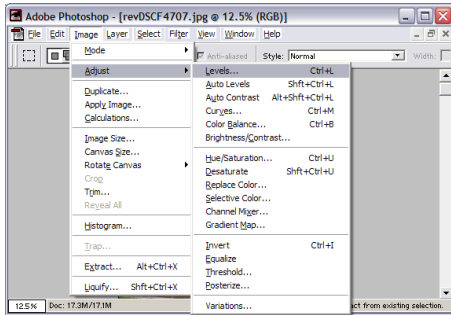


Image > Adjust > Levels

- Set Low to the left “edge” of the histogram spikes
- Set the High to the right “edge” of the histogram spikes
- Place the midpoint tones at in the center of one of the large bell peaks
- Keep “preview” turned on
- Can individual set Red, Green, and Blue

Levels Dialog

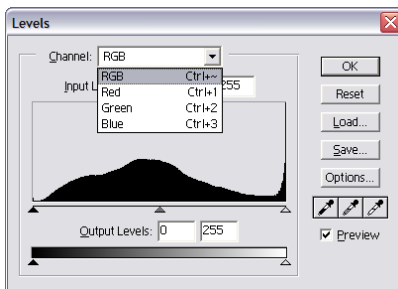


Image > Adjust > Curves

- Most useful if original image exposure is very poor or has very low contrast
- Can set multiple curve points by clicking a new “point” on the curve and dragging to desired location
- Can also create “posterized” or “solarized” images in this manner

Curves Dialog

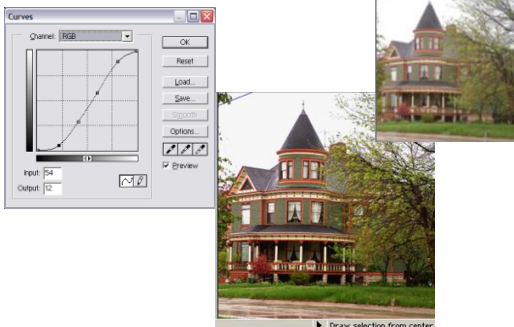


Image > Adjust > Variations

- Gives a preview of different color settings as well as different exposure settings
- You can set the amount of change anywhere from “Fine” to “Coarse”
- You can indicate “tone band” to change
- On entry – Variations will create a “proposed” group of settings (the original and current may look different)

Variations Dialog

- Set tone band first
- Fix Lighter/Darker
- Correct Color



Color Balance

- Easiest is through Variations
- Finer control through Levels & Curves
- Also –
 - Image > Adjust > Color Balance
 - Image > Adjust > Hue/Saturation
- Hint: Look at WHITES and BLACKS to help determine color cast

Image Adjust Color Balance

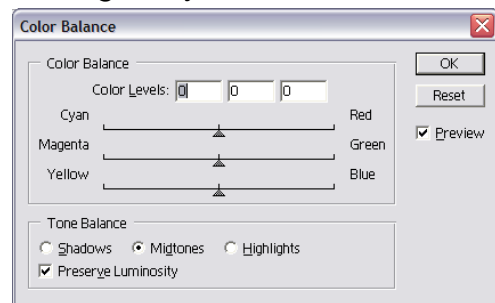
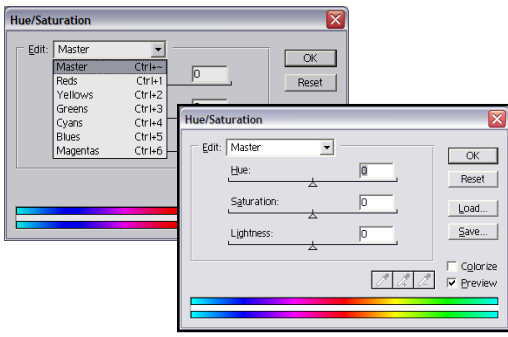
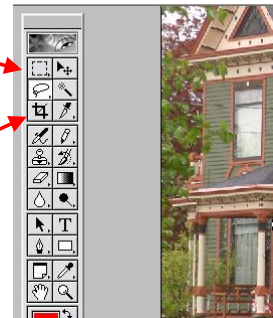


Image Adjust Hue/Saturation



Incorrect Cropping

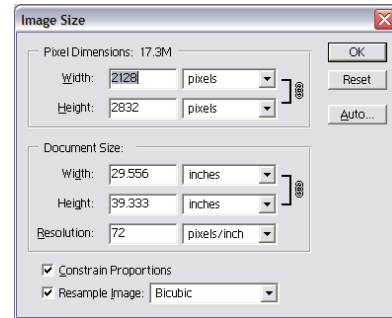
- Use Marquee Tool and then Image > Crop
- Or
- Use the Cropping Square on Toolbar



Incorrect Image Size

- Figure out the resolution in terms of PIXELS needed in each direction (height & width) – based on:
 - Inches x DPI (dots-per-inch)
- Image > Image Size
 - Bicubic resample
 - Constrain proportions (to avoid distortion)

Image Size Dialog



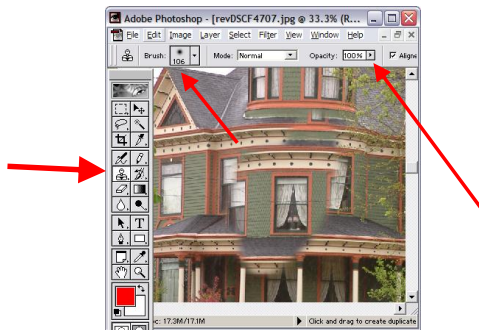
Blemishes or Distracting Backgrounds

- Clone Stamp Tool
- Or
- Lasso & Filters

Clone Stamp Tool

- Stamp Brush Size and Opacity
 - Stamp source (hold down ALT key and click)
 - Stamp Destination
- Hint: Do small sections at a time
- Pick a source that matches the tone values (light/dark) of the surrounding destination area

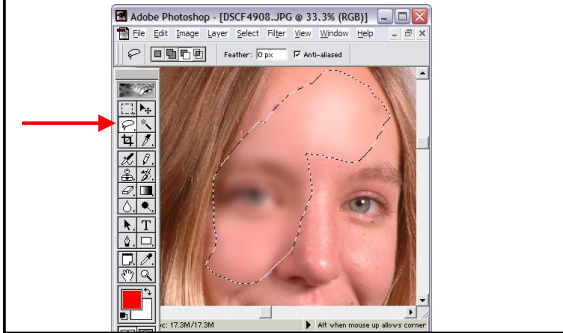
Clone Stamp Tool



Lasso Tool and Filters

- Lasso can be set to single grab, additive grab, or subtractive grab
 - Outline the areas of the image you wish to change
 - FILTERS > BLUR > GAUSSIAN
 - FILTERS > NOISE > ADD NOISE 1.5%
- Alternatively, you can Lasso an area, copy it, and then paste it over old image area.

Lasso Tool

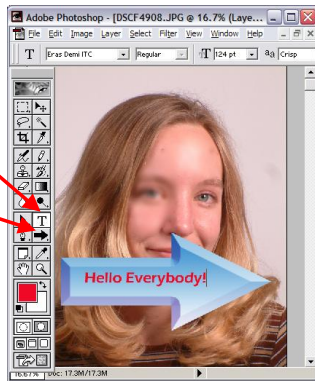


Need to Add Words to Image

- Find a “solid” area of background
- Otherwise, draw a shape on the image
- Select the text tool
- Set the font and color
- Type your message
- Press the checkmark to accept (or x to cancel)

Adding Text

- Text Tool
- Shape Tool



The Toolbar (top)

- Marquee
- Lasso
- Cropping Square
- Position Tool
- Magic Selection
- Slicing Tool (HTML image maps)



The Toolbar (middle)

- Airbrush
- Clone/Pattern Stamp
- Eraser
- Blur /Sharpen
- Path / Points selection
- Pen
- Pencil
- History brush
- Gradient
- Dodge / Burn
- Text
- Custom Shapes

