

Grading Homework Automatically with D2L

Skill Drill

Quiz

James Falkofske
2009

Invitation

- Do you dread the thought of sitting down to grade yet another stack of homework assignments?
- Would it be helpful to your students to get instant feedback about the questions they answered incorrectly?
- Would students benefit from being able to complete additional sets of homework questions to help build their confidence and proficiency (and raise their scores)?
- Learn how you can take advantage of the D2L Quiz tool to have students complete homework assignments online and give students instant feedback on their progress.

Overview

- What are the possibilities?
- Design assumptions?
- Strategies for engagement and motivation?
- What are specific tools and settings?

Questions

- Are students getting engaged with the information?
- Are students getting enough drill and practice time?
- How are students getting personalized feedback about their performance in your course?

Assumptions

- Students will acquire skills only after sufficient practice
- Students are pragmatic and will budget time to activities which are graded
- Students increase their learning if they understand where their errors occurred
- Students should have the opportunity to maximize their learning and their performance

Strategies

- Assessments are by individual, but collaboration is encouraged

Strategies

- Graded drill and practice
- Large question sets to provide variety and challenge thinking with different views of a problem

Strategies

- Question difficulty progresses
- Feedback provided for all questions – to help direct students to correct answers

The D2L Quiz Tool for Homework

- Quizzes are online worksheets
- Questions are randomly drawn from test bank
- Essay questions used to justify answers selected in multiple-choice questions
- Use of visuals, audio, and video clips for interaction

Grading

- Instant grading and feedback –
Submission Views: show questions answered incorrectly with answers
- Multiple attempts provide drill and practice –
Attempts Allowed set to more than 1;
Overall Grade Calculation set to Last Attempt

Feedback

- Machine graded questions include explanations for the correct answer choice
- Essay questions include a sample answer – which students should read and compare to their own answers
- Reflection follow-up: students can be asked to write a reflection on how their answers differed from the instructor's answers and what they have learned from the experience (dropbox assignment)

Control the Flow

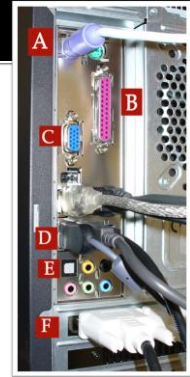
- Advanced Attempt Conditions and Conditional Release – students must continue to take assessment until a minimum percentage scored, which in turn releases the next homework item (conditional release on next item)

Up Front Work

- Organize and author large question sets
 - Respondus 3.5 convert from Word into D2L format

Up Front Work

- Provide "feedback" on each question to explain correct answer choice
- Build sets of questions around specific images or media objects

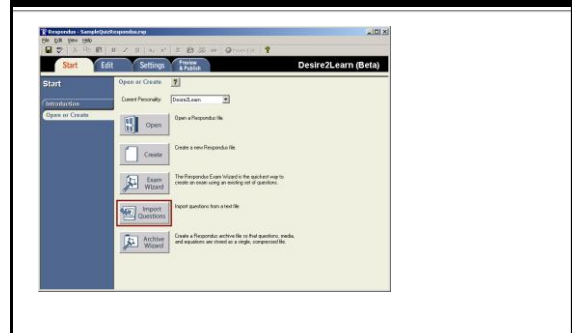


Multiple Distracters & Feedback

5	Articles	0	The articles tool is used to read online journal articles and other course readings. The dropdown is used for submitting papers and other homework.
6	Dropbox	100	Correct answer!
7	Homework	0	There is no tool named "homework" in D2L. The dropdown is used for submitting papers and other homework.

[Expand question hint](#)
[Collapse question feedback](#)
 Question Feedback: THIS IS FOUND ON PAGE 15.

Respondus – Quiz Editing Tool



Respondus Standard Format

- 1. Question starts with number, period, space and is all on one line with no carriage returns (allow to word-wrap)
 - @ provided feedback for the question above
 - a. each answer choice must start with letter, period, and space.
 - *b. correct answer starts with asterisk
 - c. additional distractors
 - d. no other text or titles allowed in file
 - @ additional feedback for item d.

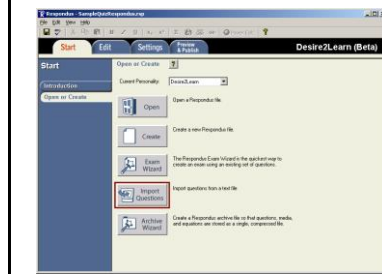
Respondus Essay Questions

- Type: E
 - 4. What is Bloom's Taxonomy
 - a. Developed by Benjamin Bloom in 1956, Bloom's Taxonomy of Educational Objectives is a classification system for the different types of skills and learning objectives for instruction

Respondus Multiple Response

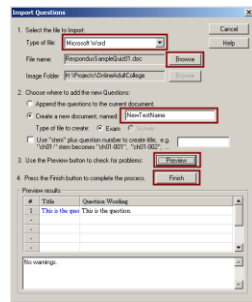
- Type: MR
- 10. Which of the following are parts of a personal computer's hardware?
 - a. Microsoft Windows
 - *b. hard drive
 - *c. RAM
 - *d. optical drive
 - e. internet

Respondus – Import Text File

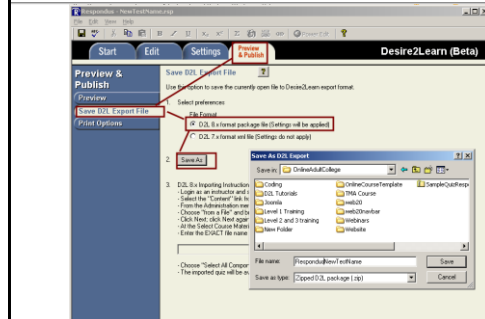


Respondus Import Questions

- Choose Type as Microsoft Word
- Browse for file
- Create new document name
- Preview (to check for errors)
- Finish to complete import

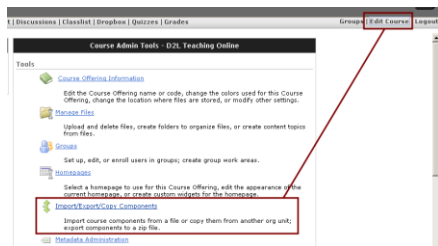


Respondus Export to D2L

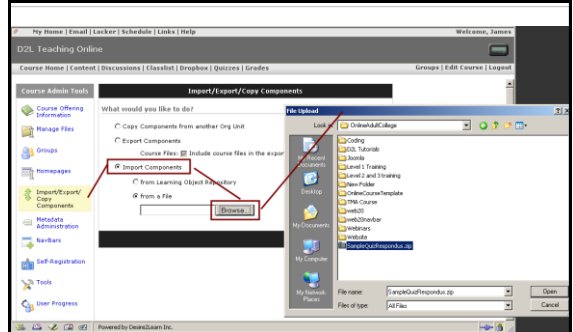


D2L File Import

- Edit Course > Import/Export/Copy Components

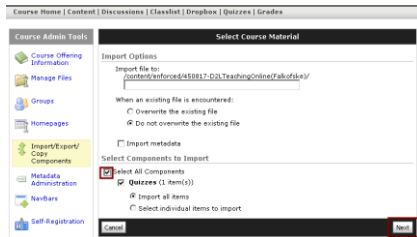


Choose File to Import



Select All Items for Import

- Select All Components and then Next
- Follow the wizard



After Import of Quiz

- Go into Question Library
- Create a new Section
- Use the Import tool to copy questions to the Question Library

Create a Random Drawn Quiz

- Create a new quiz
- Create a Random Folder
- Import Questions into Random Folder
- Indicate number of questions to Select



Other Thoughts...